

**WARD APPARATUS**

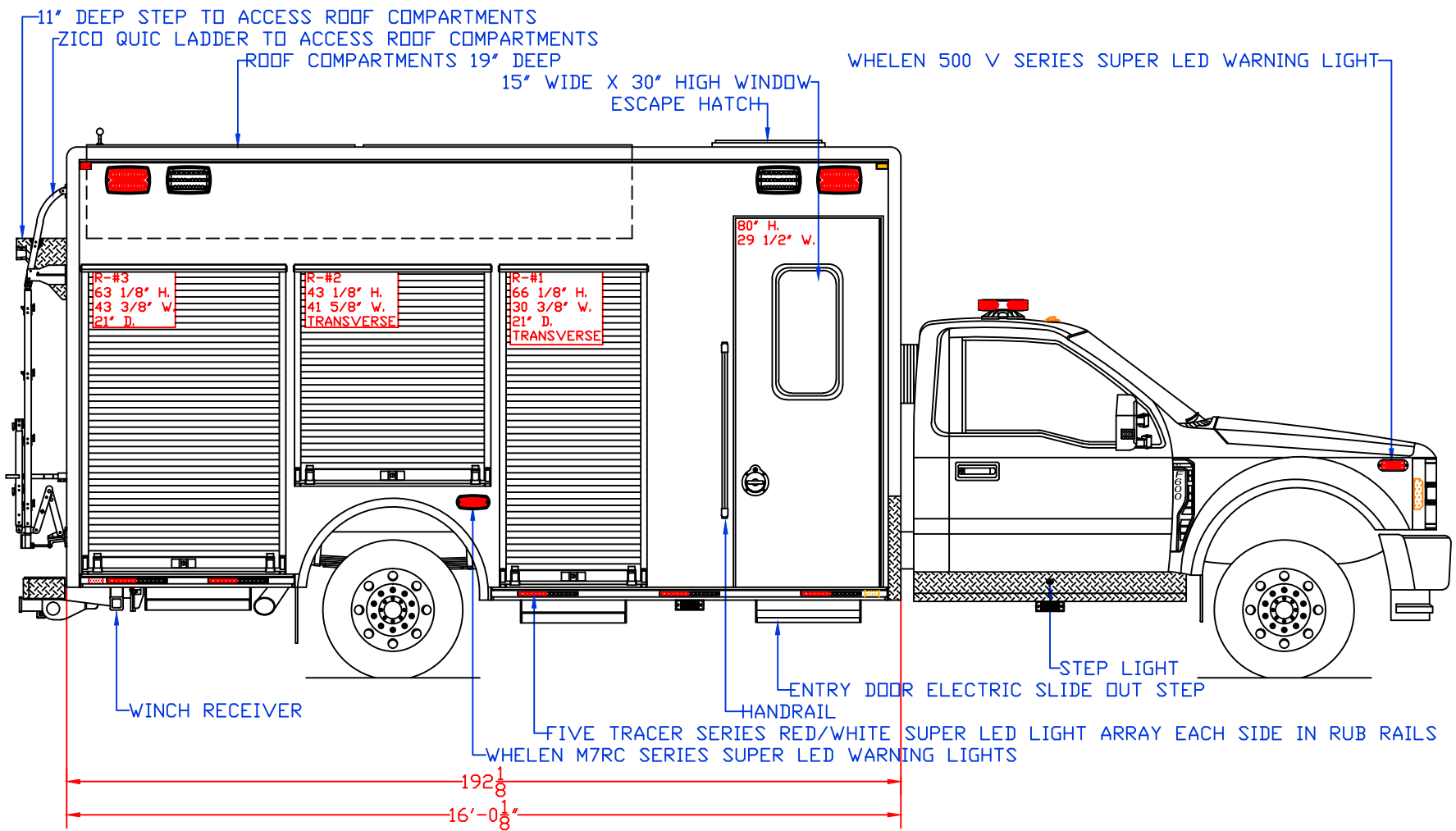
1250 SCHWEIZER ROAD      PHONE (607) 796-0149  
 HORSEHEADS, NY 14845      FAX (607) 739-7092

CUSTOMER APPROVED BY:

VEHICLE TYPE: DIVE	CHASSIS: FORD F-800 REGULAR CAB 4X4
VIEW: STREETSIDE	BODY MAT'L: ALUMINUM
SCALE: NTS	BODY LENGTH: 192 1/8"
DRAWN BY: NRW	APPROVED BY:
DATE: 1/6/2025	BODY STYLE:
DWG NO.: STMARYSFD	REVISION:

ST. MARYS 15' CREW FORWARD RESCUE

NOTE: ALL DIMENSIONS ARE APPROXIMATE



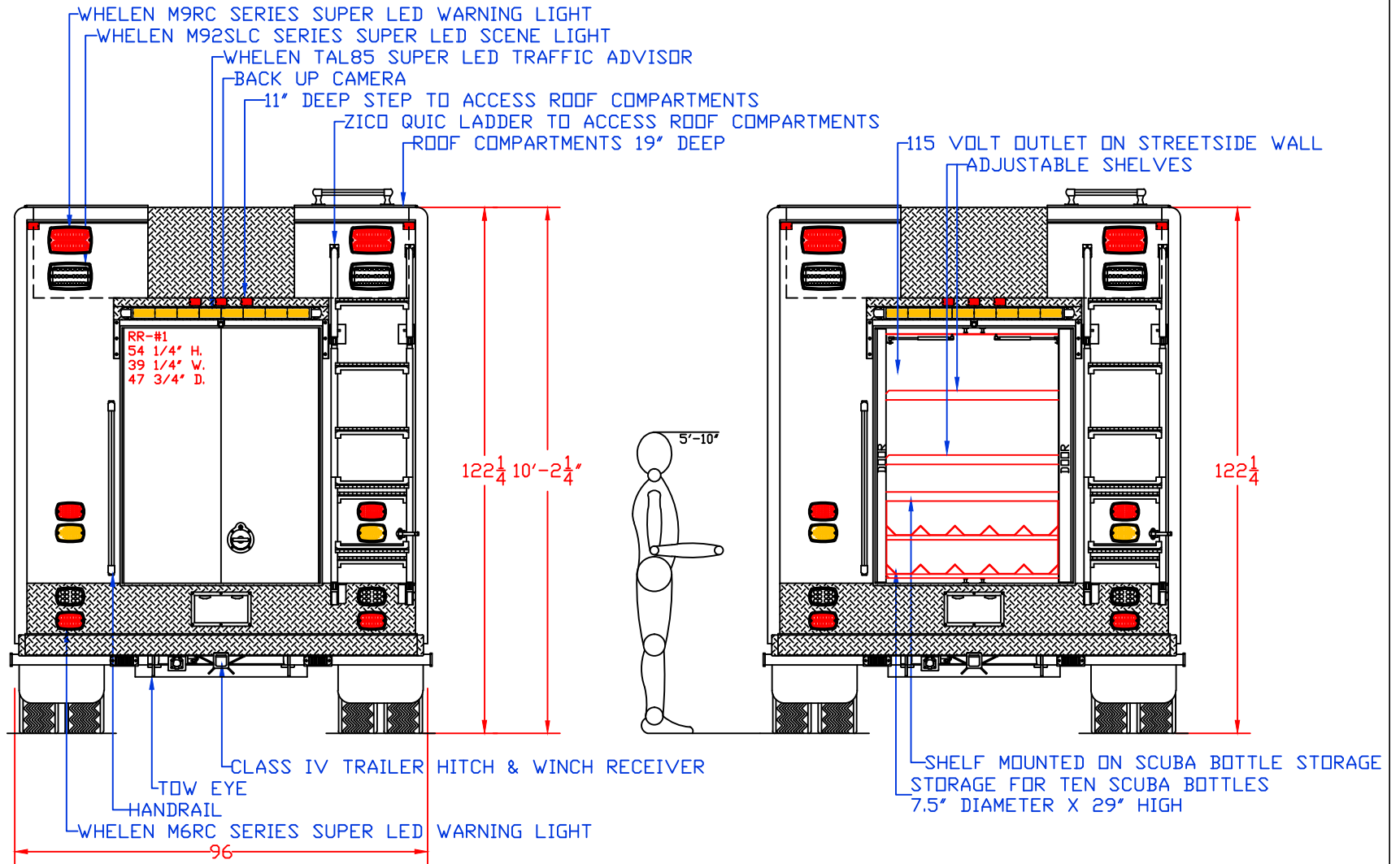
**WARD APPARATUS**  
 1250 SCHWEIZER ROAD    PHONE (607) 796-0149  
 HORSEHEADS, NY 14845    FAX (607) 739-7092

**CUSTOMER APPROVED BY:**

VEHICLE TYPE: DIVE	CHASSIS: FORD F-800 REGULAR CAB 4X4
VIEW: CURBSIDE	BODY MAT'L: ALUMINUM
SCALE: NTS	BODY LENGTH: 192 1/8"
DRAWN BY: NRW	APPROVED BY:
DATE: 1/6/2025	BODY STYLE:
DWG NO.: STMARYSFD	REVISION:

ST. MARYS 15' CREW FORWARD RESCUE

NOTE: ALL DIMENSIONS ARE APPROXIMATE



**WARD APPARATUS**

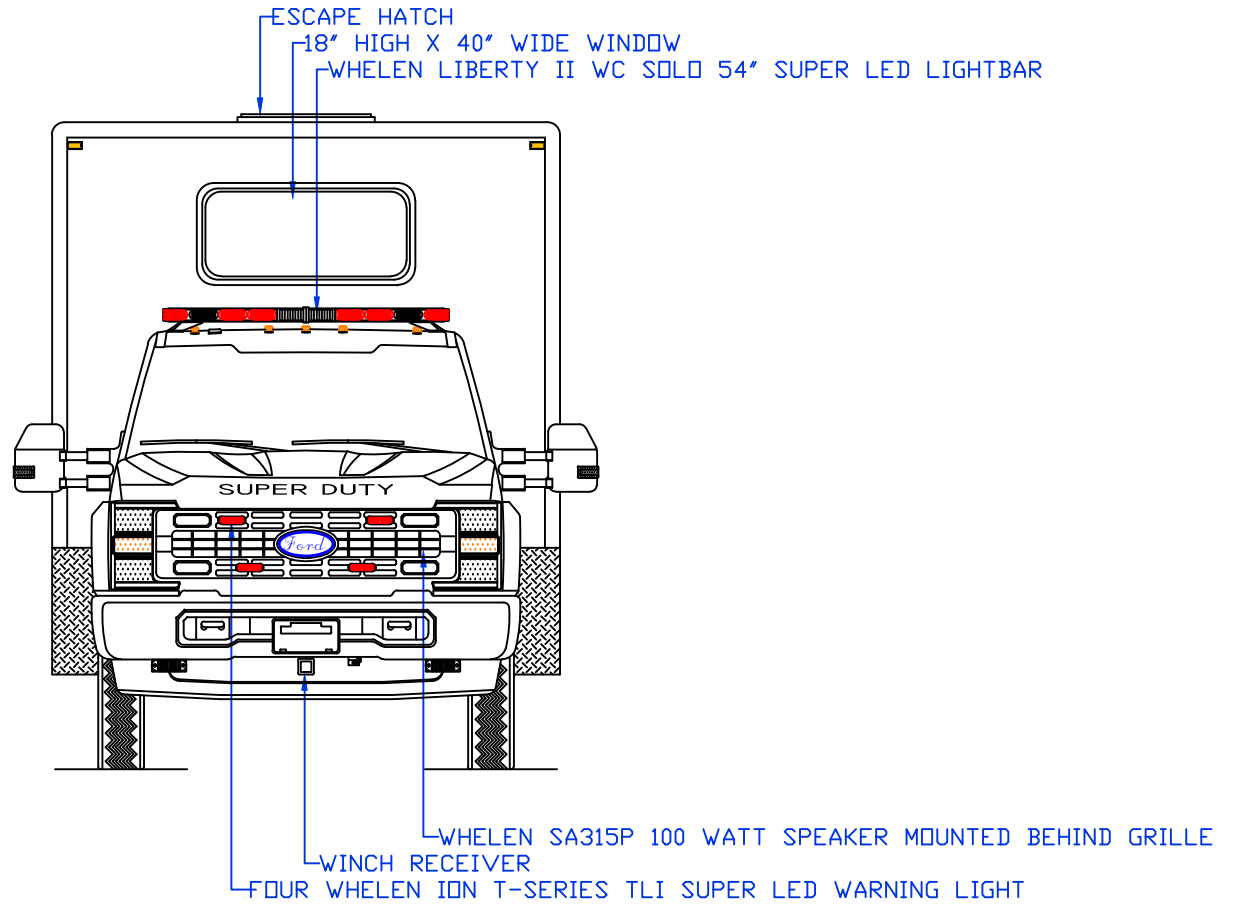
1250 SCHWEIZER ROAD PHONE (607) 796-0149  
 HORSEHEADS, NY 14845 FAX (607) 739-7092

CUSTOMER APPROVED BY:

VEHICLE TYPE: DIVE	CHASSIS: FORD F-800 REGULAR CAB 4X4
VIEW: REAR & REAR COMPARTMENT LAYOUT	BODY MAT'L: ALUMINUM
SCALE: NTS	BODY LENGTH: 192 1/8"
DRAWN BY: NRW	APPROVED BY:
DATE: 1/6/2025	BODY STYLE:
DWG NO.: STMARYSFD	REVISION:

ST. MARYS 15' CREW FORWARD RESCUE

NOTE: ALL DIMENSIONS ARE APPROXIMATE



**WARD APPARATUS**

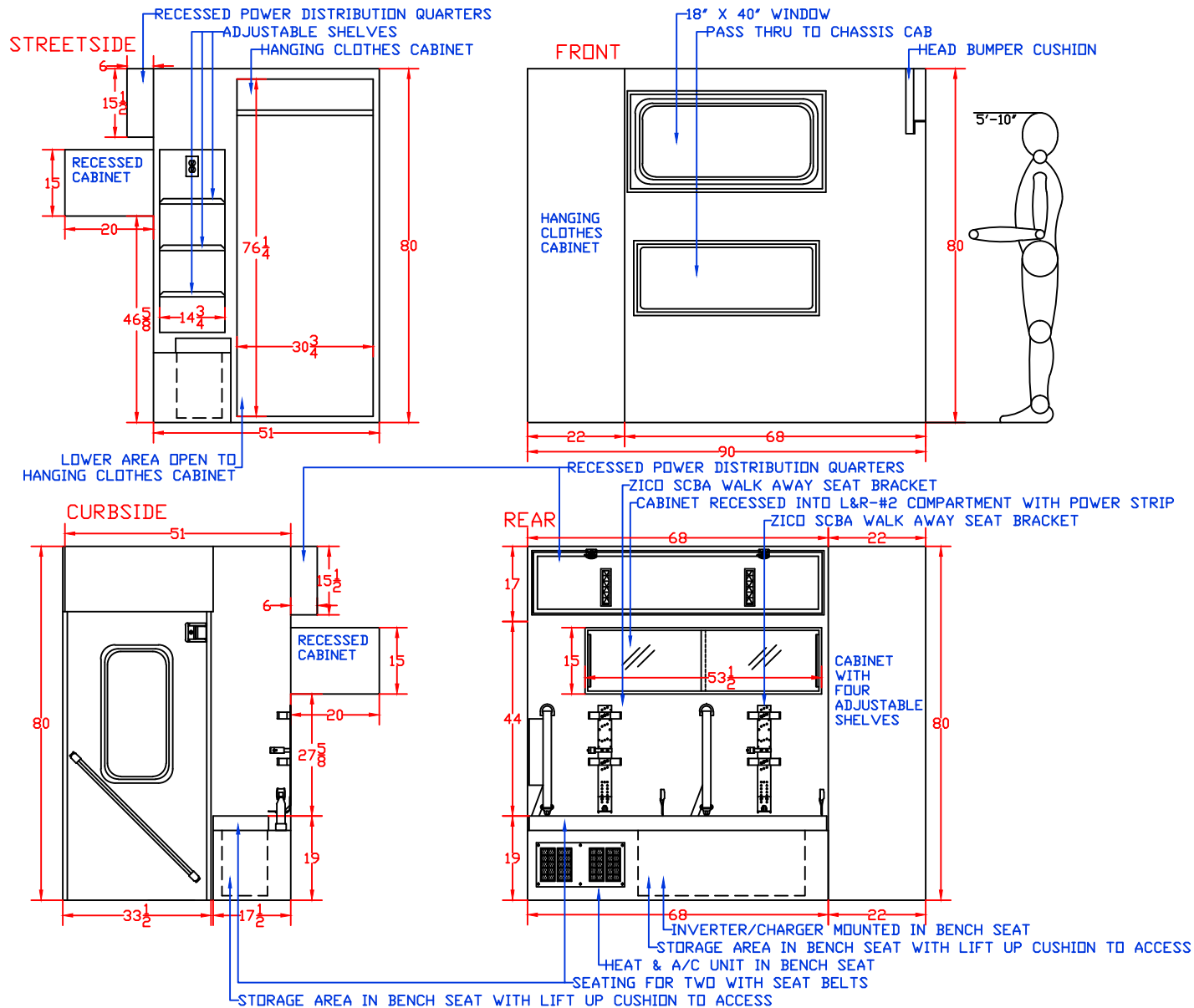
1250 SCHWEIZER ROAD    PHONE (607) 796-0149  
 HORSEHEADS, NY 14845    FAX (607) 739-7092

**CUSTOMER APPROVED BY:**

VEHICLE TYPE: DIVE	CHASSIS: FORD F-800 REGULAR CAB 4X4
VIEW: FRONT	BODY MAT'L: ALUMINUM
SCALE: NTS	BODY LENGTH: 192 1/8"
DRAWN BY: NRW	APPROVED BY:
DATE: 1/8/2025	BODY STYLE:
DWG NO.: STMARYSFD	REVISION:

ST. MARYS 15' CREW FORWARD RESCUE

NOTE: ALL DIMENSIONS ARE APPROXIMATE



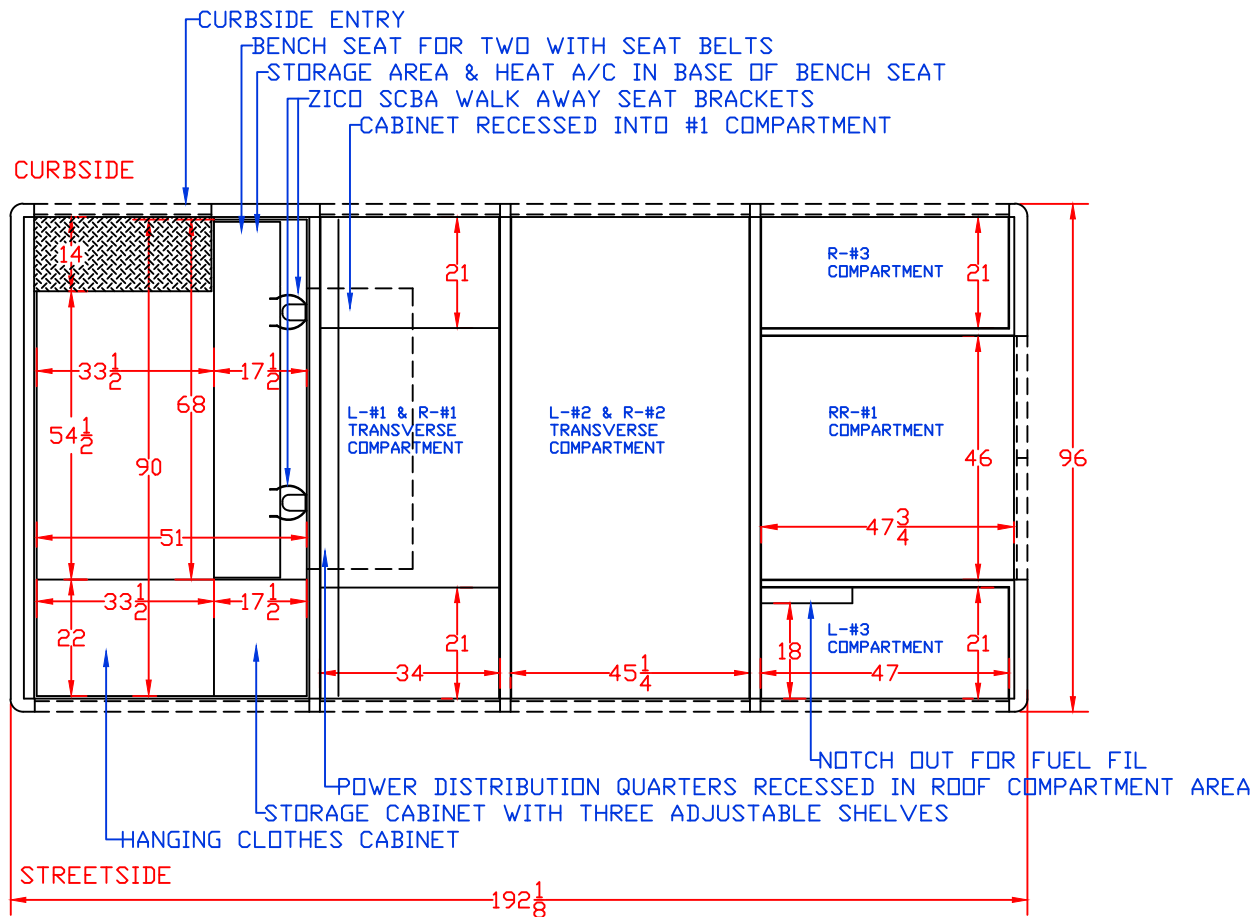
**WARD APPARATUS**  
 1250 SCHWEIZER ROAD PHONE (607) 796-0149  
 HORSEHEADS, NY 14845 FAX (607) 739-7092

CUSTOMER APPROVED BY:

VEHICLE TYPE: DIVE	CHASSIS: FORD F-800 REGULAR CAB 4X4
VIEW: CREW AREA	BODY MAT'L: ALUMINUM
SCALE: NTS	BODY LENGTH: 192 1/8"
DRAWN BY: NRW	APPROVED BY:
DATE: 1/8/2025	BODY STYLE:
DWG NO.: STMARYSFD	REVISION:

ST. MARYS 15' CREW FORWARD RESCUE

NOTE: ALL DIMENSIONS ARE APPROXIMATE



**WARD APPARATUS**

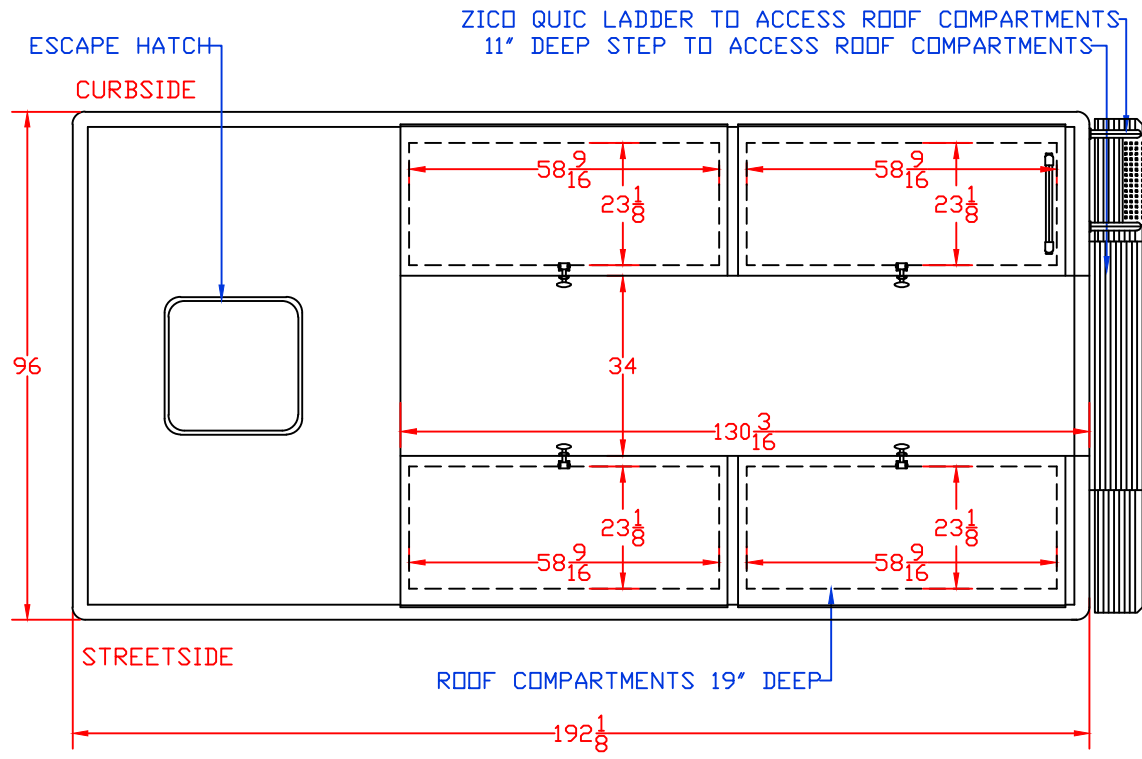
1250 SCHWEIZER ROAD PHONE (607) 796-0149  
 HORSEHEADS, NY 14845 FAX (607) 739-7092

**CUSTOMER APPROVED BY:**

VEHICLE TYPE: DIVE	CHASSIS: FORD F-800 REGULAR CAB 4X4
VIEW: TOP	BODY MAT'L: ALUMINUM
SCALE: NTS	BODY LENGTH: 192 1/8"
DRAWN BY: NRW	APPROVED BY:
DATE: 1/6/2025	BODY STYLE:
DWG NO.: STMARYSFD	REVISION:

ST. MARYS 15' CREW FORWARD RESCUE

NOTE: ALL DIMENSIONS ARE APPROXIMATE



**WARD APPARATUS**

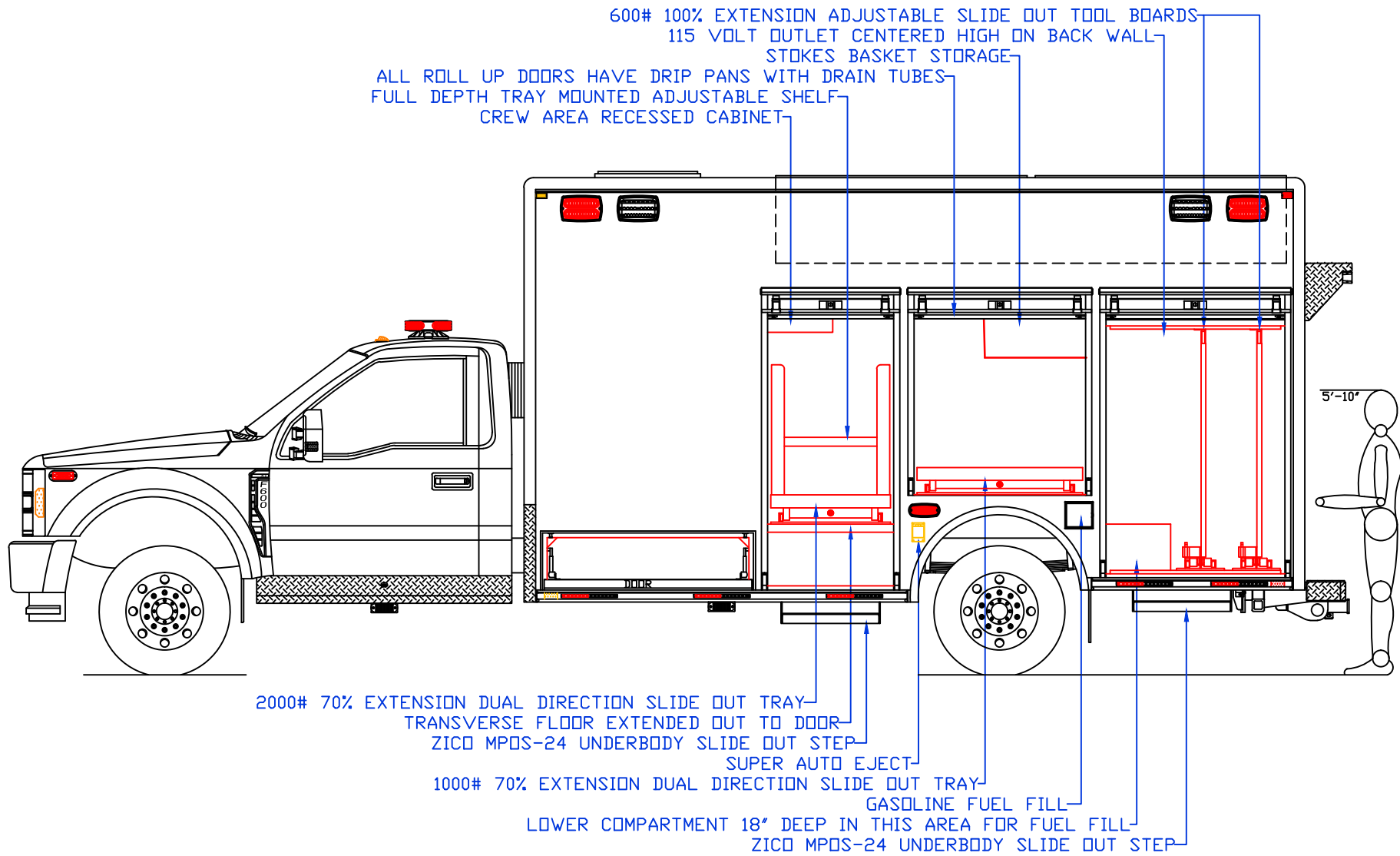
1250 SCHWEIZER ROAD PHONE (607) 796-0149  
HORSEHEADS, NY 14845 FAX (607) 739-7092

CUSTOMER APPROVED BY:

VEHICLE TYPE: DIVE	CHASSIS: FORD F-800 REGULAR CAB 4X4
VIEW: ROOF	BODY MAT'L: ALUMINUM
SCALE: NTS	BODY LENGTH: 192 1/8"
DRAWN BY: NRW	APPROVED BY:
DATE: 1/6/2025	BODY STYLE:
DWG NO.: STMARYSFD	REVISION:

ST. MARYS 15' CREW FORWARD RESCUE

NOTE: ALL DIMENSIONS ARE APPROXIMATE

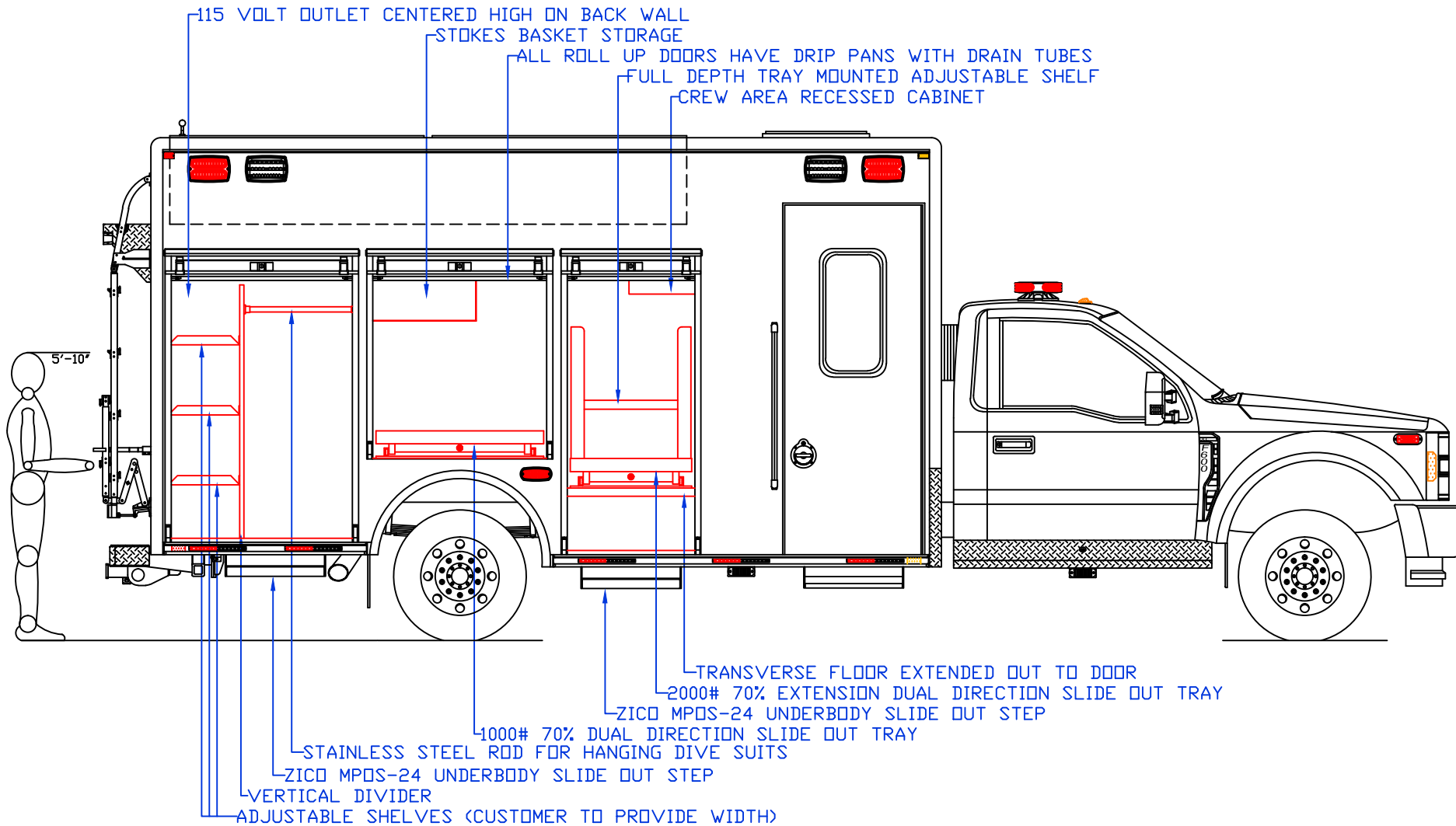


**WARD APPARATUS**  
 1250 SCHWEIZER ROAD PHONE (607) 796-0149  
 HORSEHEADS, NY 14845 FAX (607) 739-7092

<b>CUSTOMER APPROVED BY:</b>	
VEHICLE TYPE: DIVE	CHASSIS: FORD F-800 REGULAR CAB 4X4
VIEW: STREETSIDE COMPARTMENT LAYOUT	BODY MAT'L: ALUMINUM
SCALE: NTS	BODY LENGTH: 192 1/8"
DRAWN BY: NRW	APPROVED BY:
DATE: 1/6/2025	BODY STYLE:
DWG NO.: STMARYSFD	REVISION:

ST. MARYS 15' CREW FORWARD RESCUE

NOTE: ALL DIMENSIONS ARE APPROXIMATE



**WARD APPARATUS**

1250 SCHWEIZER ROAD PHONE (607) 796-0149  
 HORSEHEADS, NY 14845 FAX (607) 739-7092

**CUSTOMER APPROVED BY:**

VEHICLE TYPE: DIVE	CHASSIS: FORD F-800 REGULAR CAB 4X4
VIEW: CURBSIDE COMPARTMENT LAYOUT	BODY MAT'L: ALUMINUM
SCALE: NTS	BODY LENGTH: 192 1/8"
DRAWN BY: NRW	APPROVED BY:
DATE: 1/6/2025	BODY STYLE:
DWG NO.: STMARYSFD	REVISION:

ST. MARYS 15' CREW FORWARD RESCUE

NOTE: ALL DIMENSIONS ARE APPROXIMATE